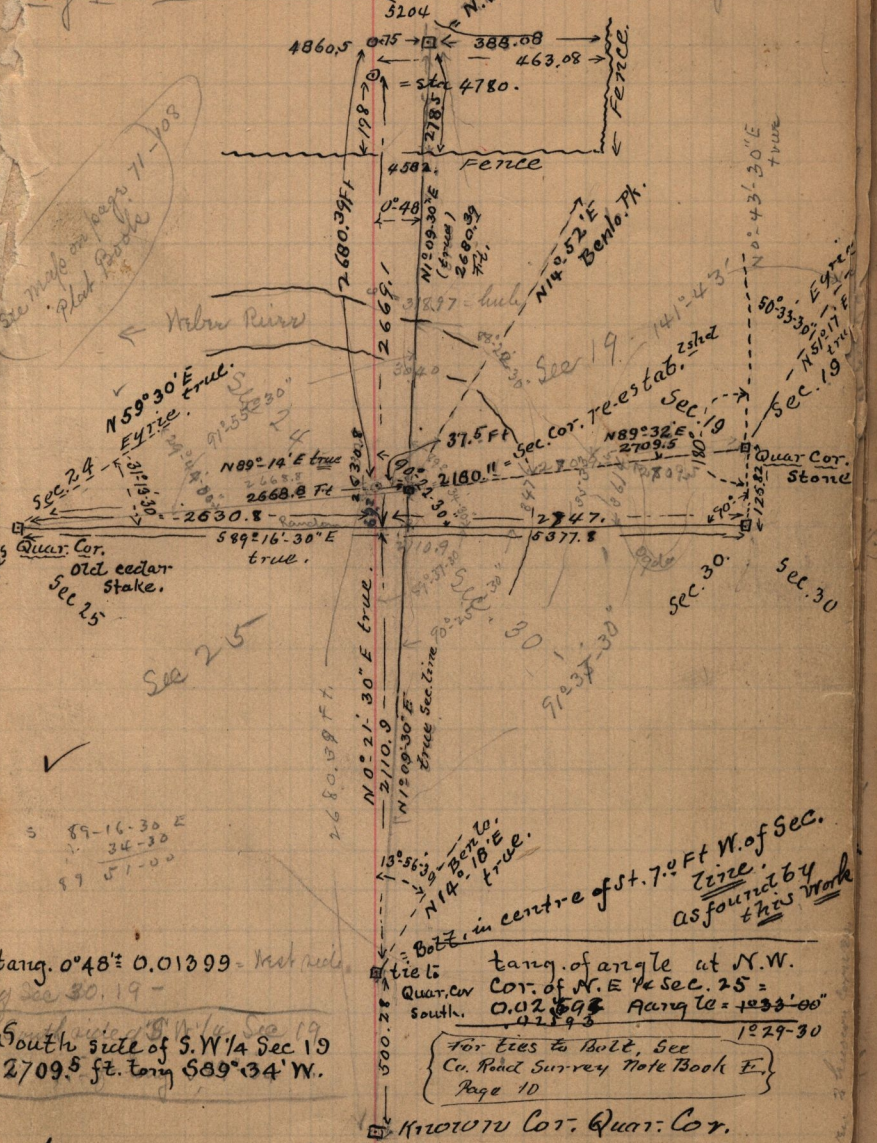


N.W. T.G. & W. as found in 1879. by me
 See notes of Jan 4-5-92
 and tied in by fences.

Aug 9-1892-

See made on page 71-108
 Plat Book



89-16-30 E
 34-30
 99 51-00

tang. $0^{\circ}48' = 0.01399$ - distance of sec 30, 19 -

South side of S.W. 1/4 Sec 19
 2709.5 ft. long $89^{\circ}34' W.$

Bot. in centre of st. 7.0 Ft W. of Sec. line.
 as found by this work

Quar. Cor. of N.E. 1/4 Sec. 25 =
 0.02598 Angle = $103^{\circ}00'$
 42193

For ties to Bolt, See
 Co. Road Survey Note Book E.
 Page 10

Known Cor. Quar. Cor.

To re-establish the missing Cor. at the N.W. Cor.

Sec. 30 T. 6. N. R. 1. W. I proceeded as per. Instructions
 From Department of 1883 -